



CONTENTS

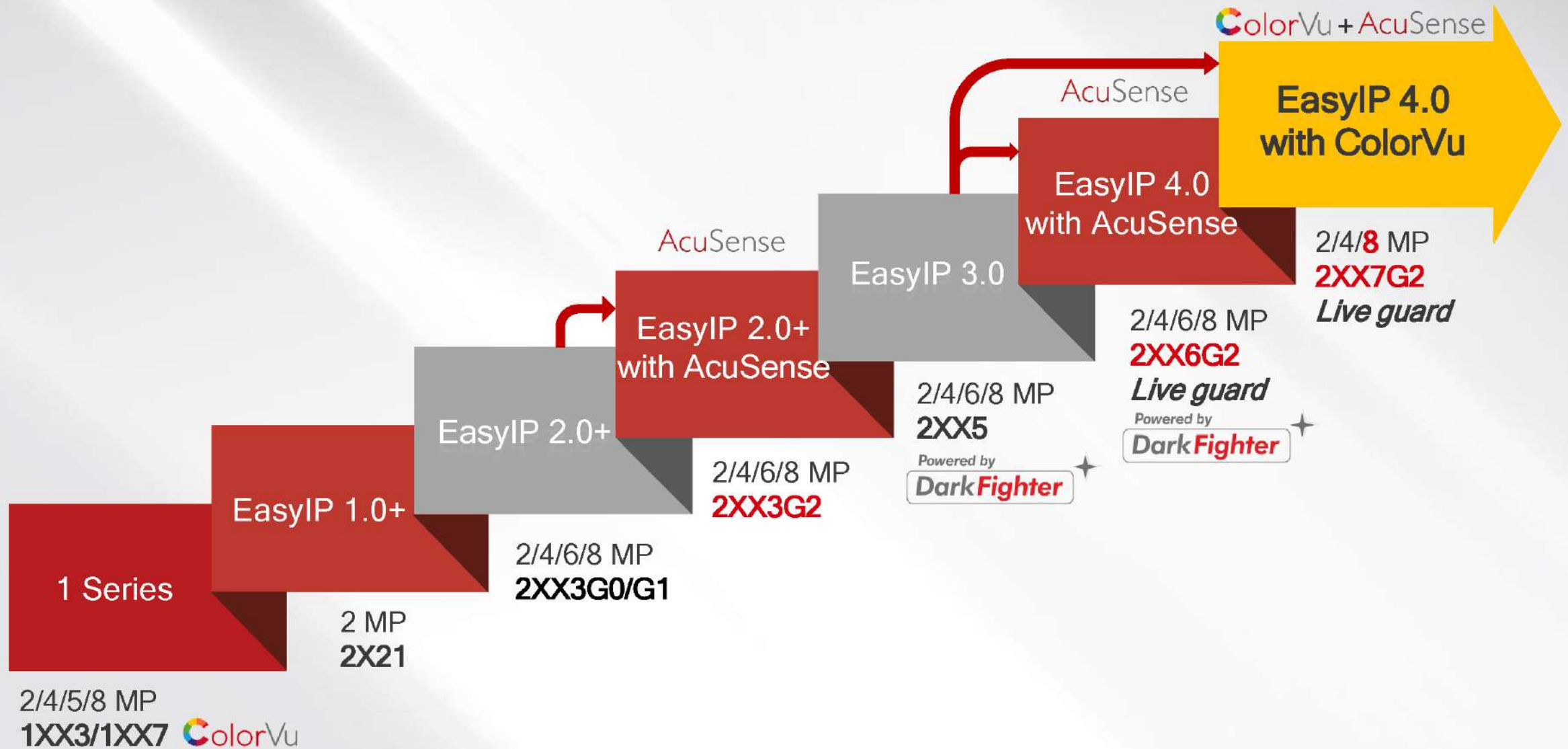
- **Network Cameras**
- **PT Cameras**
- **PTZ Cameras**
- **NVRs**
- **Hik-ProConnect**



01 Network Cameras

- Network Camera Product Map
- ColorVu Technology
- AcuSense Technology
- Value Series
- Solar-powered Security Camera Setups

Type D Network Camera Product Map





*Even more
than ColorVu*



Even more than ColorVu

ColorVu +
Panoramic

See wider and
see more



ColorVu +
AcuSense

Smarter detection
around the clock

ColorVu + Live
Guard

Day and night
protection



ColorVu + 4K

Capture richer, more
colorful details



ColorVu + Zoom

Zoom in with
vivid color



ColorVu + Panoramic

See wider and see more

Conventional security solution for reducing blind zones: multiple cameras
One camera with wider field of view reduces blind zone with higher efficiency



ColorVu + Panoramic

One camera can cover the whole hall and break through the limit of field of view.



ColorVu + Panoramic

Pioneering Image Fusion Technologies

Dual lens, fusion image



pixel-level image
registration
technology

1

2

Hikvision image
fusion algorithm

180° panoramic view,
seamless image



Left lens image

Right lens image



Seamless fusion image

Pioneering Image Fusion Technologies

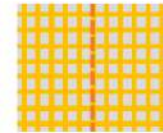
Pixel-level image registration - graphic processing of fusion image



Conventional line-level image registration



Causes inevitable loss of image, twisting or distortion in the fusion image.



Pioneering pixel-level image registration



Avoid image loss, twisting or distortion in the whole fusion image.



Stage 1 - Stitching of two videos in graphics without color processing - done

Stage 2 - Fusion of color performance in two pictures - not started

* The fusion images shown in this page only runs the image registration technology without processing of color performance, which are not the final fusion performance of panoramic cameras with ColorVu.

Pioneering Image Fusion Technologies

Hikvision Image Fusion Algorithm - color and brightness processing of fusion image



Stage 1 Stitching of two videos in graphics without color processing - done

Stage 2 - Fusion of color performance in two pictures - done



Conventional image fusion algorithm

Two cameras are in different lighting conditions, providing different brightness and color rendition performance with obvious seam



Hikvision image fusion algorithm

Hikvision's pioneering image fusion algorithm can process the different lighting conditions of two cameras, providing smooth and seamless fusion performance.

Benefits of Panoramic Cameras

Multiple cameras

- More camera costs
- Higher installation cost and time consuming
- Insufficient camera numbers may leave blind spot



VS

Panoramic camera with ColorVu

- ✓ Single camera covers wide area without blind spot
- ✓ Installation cost reduced
- ✓ Target search is easier in one channel than in multiple channels.



Panoramic Cameras with ColorVu



5120 × 1440 UHD 4K resolution



0.0005 Lux @ F1.0



4 mm x 2 fixed focal lens, 180° FOV



AcuSense technology



130 dB WDR



IP67



Live Guard



DS-2CD2387G2P-LSU/SL
DS-2CD2T87G2P-LSU/SL

Upcoming Products

Panoramic Cameras with ColorVu



6 MP: 3632 x 1632 @ 20 fps
4 MP: 3040 x 1368 @ 25/24 fps



0.0005 Lux @ F1.0



Dual lens, 180° FOV



AcuSense technology



130 dB WDR



IP67



Live Guard



DS-2CD2367G2P-LSU/SL
DS-2CD2347G2P-LSU/SL
DS-2CD2T67G2P-LSU/SL
DS-2CD2T47G2P-LSU/SL

Release: Jun. 2022

ColorVu + Panoramic

Application Scenarios



Parking lot



Park



Road



Plantation



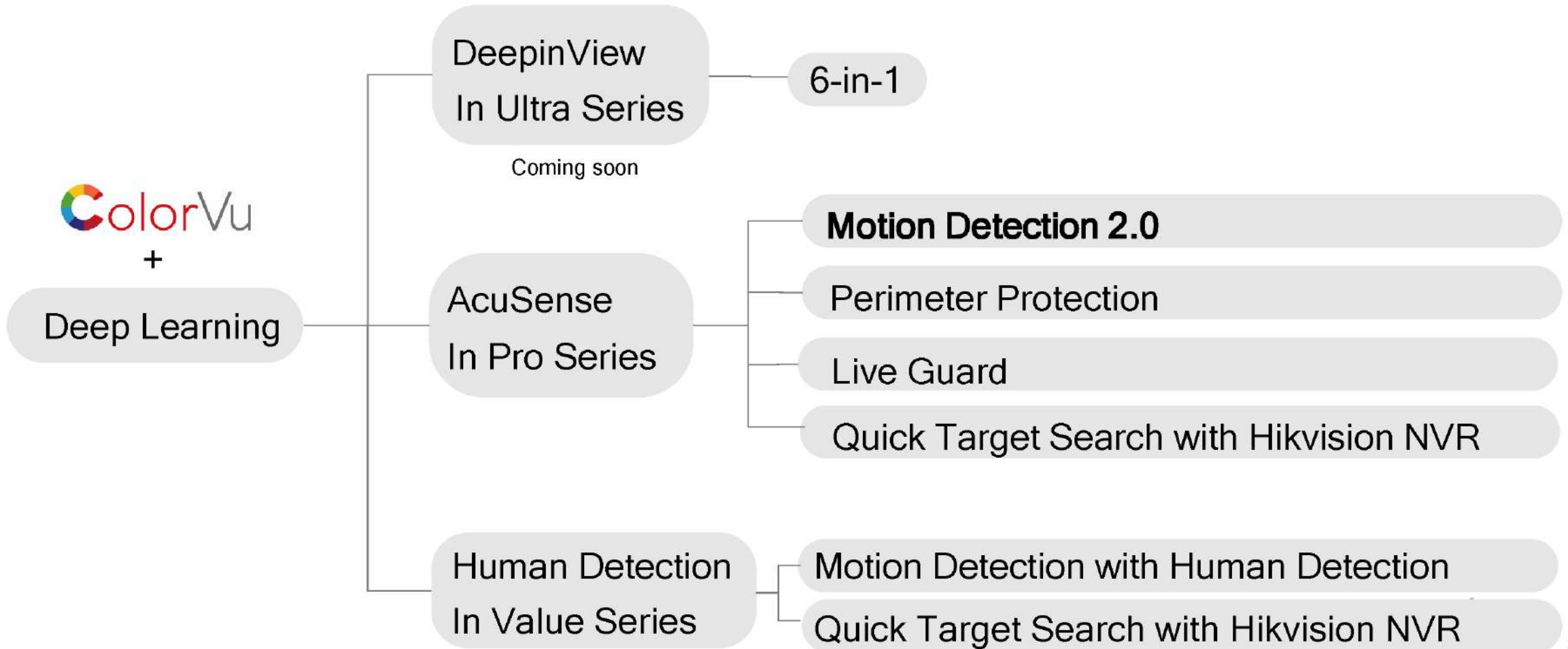
Stadium



Intersection

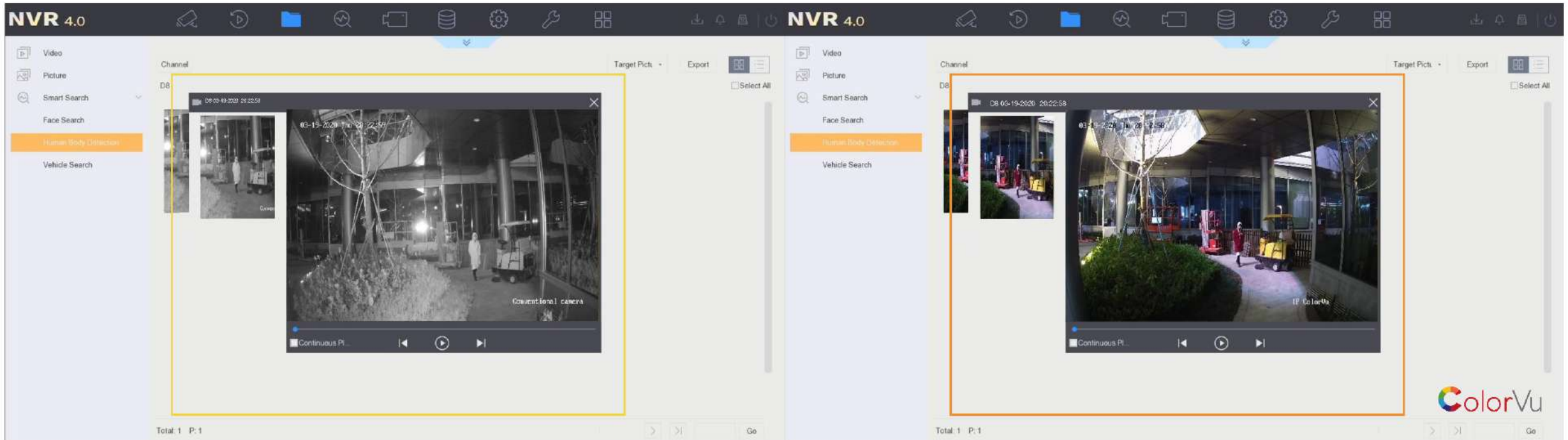
ColorVu + Deep Learning

Smarter detection around the clock



ColorVu + Deep Learning

Quick Target Search with Hikvision NVR with AcuSense technology



Searching result of conventional camera -
Black and white targets

Searching result of camera with ColorVu -
Colorful targets



ColorVu+ Live Guard

24/7 colorful imaging
ColorVu

Focusing on human and
vehicle targets
AcuSense

Real-time alerts
Strobe light and audio alarm



Application of Live Guard in Residential Market



IPC



PIR detector



Strobe&Siren



Speaker



ColorVu+ Live Guard

0.0005 lux
ColorVu



130 dB WDR

AcuSense

Human and vehicle
classification.



4/8 MP



Live guard: strobe light and audio alarm



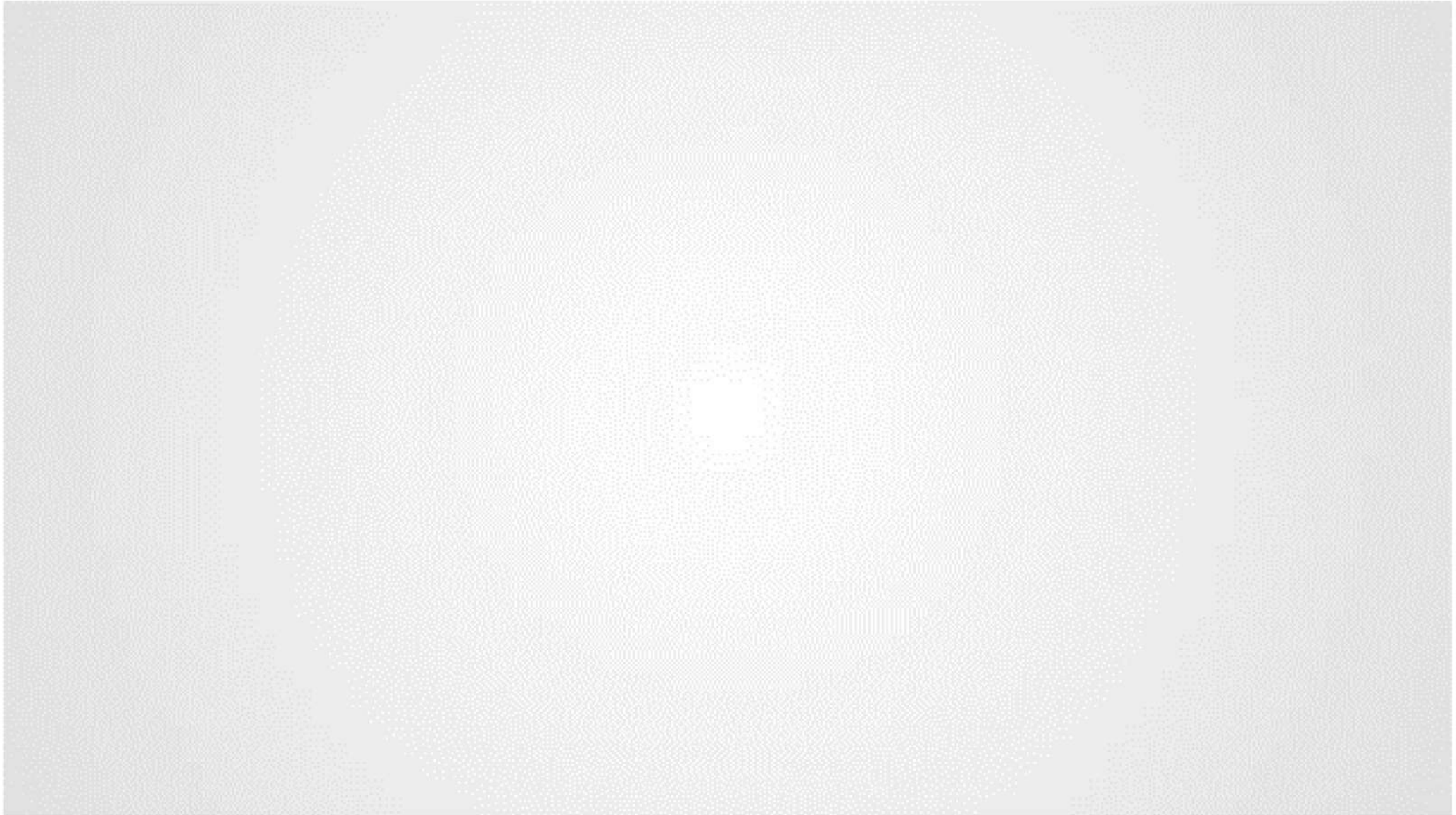
DS-2CD2387G2-LSU/SL
DS-2CD2T87G2-LSU/SL
DS-2CD2047G2-LU/SL
DS-2CD2347G2-LSU/SL
DS-2CD2T47G2-LSU/SL
DS-2CD2387G2P-LSU/SL
DS-2CD2T87G2P-LSU/SL



IP67



ColorVu+ Live Guard



ColorVu + 4K

* Images shot with supplemental light off



ColorVu + 4K

4K powered by DarkFighter



4K ColorVu



4K Cameras with ColorVu

- **1/1.2"** sensor, 0.0005 lux @ F1.0
- **AcuSense**
- 4K, 2.8/4/6 mm
- 130 dB WDR
- -U: built-in mic
- IP67, with supplemental light



DS-2CD2087G2-L(U)
DS-2CD2387G2-L(U)
DS-2CD2T87G2-L
DS-2CD2387G2-LSU/SL
DS-2CD2T87G2-LSU/SL

Upcoming Products

ColorVu + Zoom

**2.8 - 12 mm VF lens
@ F1.0 Fixed Aperture**



0.0005 lux

AcuSense

Supporting human and vehicle
classification.



4 MP

130 dB WDR



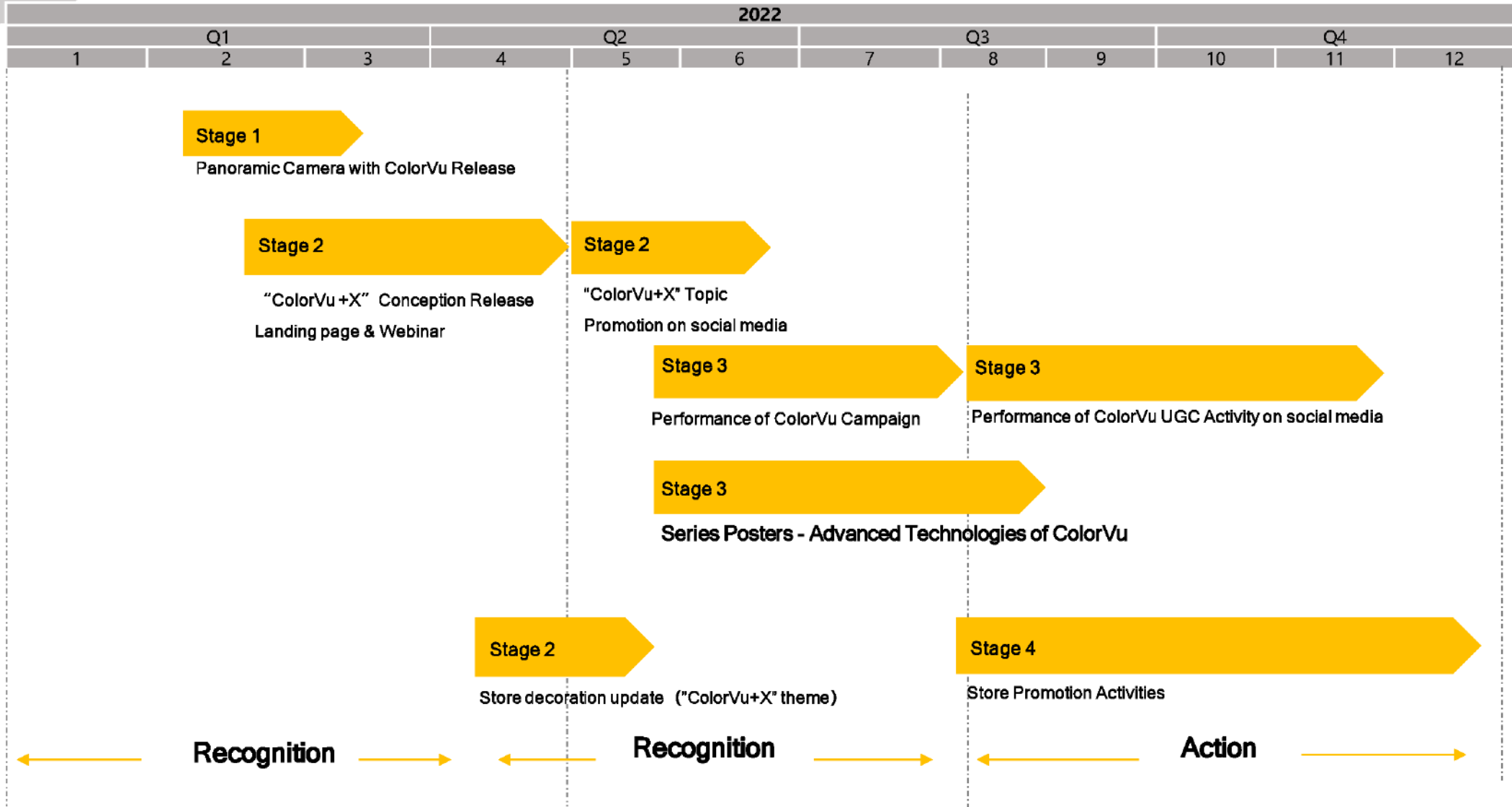
**DS-2CD2647G2T-LZS
DS-2CD2747G2T-LZS**

**T: pigtail connection
Release: 2022.7**



IP67, IK10

ColorVu+X Campaign



Pro Series with ColorVu

Product Showcase - EasyIP 4.0 with ColorVu

2/4/8 MP



DS-2CD2087G2-L(U)
DS-2CD2047G2-L(U)
DS-2CD2027G2-L(U)



DS-2CD2147G2-L(SU)
DS-2CD2147G2(-SU)
DS-2CD2127G2(-SU)



DS-2CD2387G2-L(U)
DS-2CD2347G2-L(U)
DS-2CD2327G2-L(U)



DS-2CD2527G2-LS
DS-2CD2547G2-LS



DS-2CD2T87G2-L
DS-2CD2T47G2-L
DS-2CD2T27G2-L



DS-2CD2647G2-LZS



DS-2CD2747G2-LZS

Live guard



DS-2CD2047G2-LU/SL



DS-2CD2347G2-LSU/SL
DS-2CD2387G2-LSU/SL



DS-2CD2T47G2-LSU/SL
DS-2CD2T87G2-LSU/SL



DS-2CD2387G2P-LSU/SL



DS-2CD2T87G2P-LSU/SL

Panoramic

**FOCUS
and ACT**

Pay Attention to
Human and Vehicle Events

**AcuSense
Technology**



Motion Detection 2.0



Perimeter Protection



Quick Target Search



Live Guard

To build an system enabled by AcuSense

1



Camera with AcuSense



Conventional NVR



Hik-Connect

- **All channels** for human and vehicle classification by camera
- Live guard: strobe light and audio alarm protection (optional)
- **Quick target search**
- Hik-Connect notification pushing

2



Camera with AcuSense



NVR with AcuSense



Hik-Connect

Conventional IP Camera

- **Flexible channels** for human and vehicle detection by camera with AcuSense and NVR in key spots
- Live guard: Strobe light and audio alarm protection (optional)
- **Quick target search** Hik-Connect notification pushing

3



Conventional IP Camera



NVR with AcuSense



Hik-Connect

- **4 channels** for human and vehicle detection by NVR
- **Quick target search**
- Hik-Connect notification pushing

4



Analog Camera



DVR with AcuSense



Hik-Connect

- **All channels** for human and vehicle detection by DVR (motion 2.0)
- Strobe light and audio alarm protection (optional)
- Quick target search
- Hik-Connect notification pushing



Live Guard - Strobe light and audio alarm respond to security threats proactively, in real time

When a human or vehicle target is detected, triggering a VCA event, the strobe light and audio alarm works instantly to warn the trespasser off.

“Warning! This is a restricted area. Please keep away!”



Differences between Cameras with AcuSense Technology

Features	2XX3G2	2XX6G2 (C)	2XX7G2 (C)
Main Feature	Conventional	Powered by DarkFighter 	
Resolution	2/4/6/8 MP	2/4/6/8 MP	2/4/8 MP
Max. Frame Rate	2 MP @ 25/30 fps 4 MP @ 25/30 fps 6 MP @ 20 fps 8 MP @ 20 fps	2 MP @ 25/30 fps 4 MP @ 25/30 fps 6 MP @ 25/30 fps 8 MP @ 25/24 fps	2 MP @ 25/30 fps 4 MP @ 25/30 fps 8 MP @ 25/24 fps
Low Illumination Levels	0.005 Lux @ F1.6	2 MP: 0.002 @ F1.4 4 MP: 0.003 @ F1.4 6 MP: 0.003 @ F1.6 8 MP: 0.003 @ F1.6	0.0005 Lux @ F1.0
Functions with AcuSense Technology	Motion Detection 2.0 Intrusion/Line Crossing	Motion Detection 2.0 Intrusion/ Line Crossing /Region Entrance/Exiting	Motion Detection 2.0 Intrusion/ Line Crossing /Region Entrance/Exiting
Face Function	Face Detection	Face Capture	Face Capture
Camera Forms	20/21/23/24/25/2T/2E/26/27/2H	20/21/23/24/25/2T/26/27/2H	20/21/23/25/2T/26/27

Anti-corrosion cameras

in EasyIP 4.0 series with AcuSense



4/8 MP



0.003 Lux @ F1.4

Powered by
DarkFighter



AcuSense technology

AcuSense
Technology



IP67



NEMA 4x Anti-corrosion (moderate protection)

* Typical application scenarios include coastal areas about 2 kilometers (1.24 miles) away from coastlines, as well as areas affected by acid rain.






DS-2CD2T46G2-4IY
DS-2CD2T86G2-4IY



DS-2CD2646G2T-IZSY
DS-2CD2686G2T-IZSY

Anti-Corrosion Protection Levels

Level	Camera Types	Description
Top-level protection		Hikvision products at this level are equipped for use in areas where professional anti-corrosion protection is a must. Typical application scenarios include coastlines, docks, chemical plants, and more.
Moderate protection		Hikvision products at this level are equipped for use in areas with moderate anti-corrosion demands. Typical application scenarios include coastal areas about 2 kilometers (1.24 miles) away from coastlines, as well as areas affected by acid rain.
No specific protection		Hikvision products at this level are equipped for use in areas where no specific anti-corrosion protection is needed.



Product Showcase

EasyIP 4.0 with AcuSense

Network Cameras with AcuSense



20 Series Mini Bullet

DS-2CD2086G2-I (U)
DS-2CD2066G2-I (U)
DS-2CD2046G2-I (U)
DS-2CD2026G2-I (U)



21 Series Dome

DS-2CD2186G2-I (SU)
DS-2CD2166G2-I (SU)
DS-2CD2146G2-I (SU)
DS-2CD2126G2-I (SU)



23 Series Turret

DS-2CD2386G2-I (U)
DS-2CD2366G2-I (U)
DS-2CD2346G2-I (U)
DS-2CD2326G2-I (U)



24 Series Cube

DS-2CD2466G2-I
DS-2CD2446G2-I
DS-2CD2426G2-I



2T Series Bullet

DS-2CD2T86G2-2I/4I
DS-2CD2T66G2-2I/4I
DS-2CD2T46G2-2I/4I
DS-2CD2T26G2-2I/4I
DS-2CD2T46G2-4IY
DS-2CD2T86G2-4IY



26 Series VF Bullet

DS-2CD2686G2-IZS
DS-2CD2666G2-IZS
DS-2CD2646G2-IZS
DS-2CD2626G2-IZS
DS-2CD2646G2T-IZSY
DS-2CD2686G2T-IZSY



27 Series VF Dome

DS-2CD2786G2-IZS
DS-2CD2766G2-IZS
DS-2CD2746G2-IZS
DS-2CD2726G2-IZS

Live Guard Network Cameras with AcuSense



20 Series Mini Bullet

DS-2CD2086G2-IU/SL
DS-2CD2066G2-IU/SL
DS-2CD2046G2-IU/SL
DS-2CD2026G2-IU/SL



23 Series Turret

DS-2CD2386G2-ISU/SL
DS-2CD2366G2-ISU/SL
DS-2CD2346G2-ISU/SL
DS-2CD2326G2-ISU/SL



2T Series Bullet

DS-2CD2T86G2-ISU/SL
DS-2CD2T66G2-ISU/SL
DS-2CD2T46G2-ISU/SL
DS-2CD2T26G2-ISU/SL



26 Series VF Bullet

DS-2CD2686G2-IZSU/SL
DS-2CD2666G2-IZSU/SL
DS-2CD2646G2-IZSU/SL
DS-2CD2626G2-IZSU/SL



25 Series Dome

DS-2CD2586G2-I(S)
DS-2CD2566G2-I(S)
DS-2CD2546G2-I(S)
DS-2CD2526G2-I(S)



2H Series VF Turret

DS-2CD2H86G2-IZS
DS-2CD2H66G2-IZS
DS-2CD2H46G2-IZS
DS-2CD2H26G2-IZS

NEMA 4X

Product Showcase

EasyIP 2.0+ with AcuSense



DS-2CD2023G2-I(U)
DS-2CD2043G2-I(U)
DS-2CD2063G2-I(U)
DS-2CD2083G2-I(U)



DS-2CD2123G2-I(S/U)
DS-2CD2143G2-I(S/U)
DS-2CD2163G2-I(S/U)
DS-2CD2183G2-I(S/U)



DS-2CD2323G2-I(U)
DS-2CD2343G2-I(U)
DS-2CD2363G2-I(U)
DS-2CD2383G2-I(U)



DS-2CD2423G2-I
DS-2CD2443G2-I
DS-2CD2463G2-I
DS-2CD2483G2-I



DS-2CD2523G2-IS
DS-2CD2543G2-I(W)S
DS-2CD2563G2-IS
DS-2CD2583G2-IS



DS-2CD2E23G2-U
DS-2CD2E43G2-U



DS-2CD2T23G2-2I/4I
DS-2CD2T43G2-2I/4I
DS-2CD2T63G2-2I/4I
DS-2CD2T83G2-2I/4I



DS-2CD2623G2-IZS
DS-2CD2643G2-IZS
DS-2CD2663G2-IZS
DS-2CD2683G2-IZS

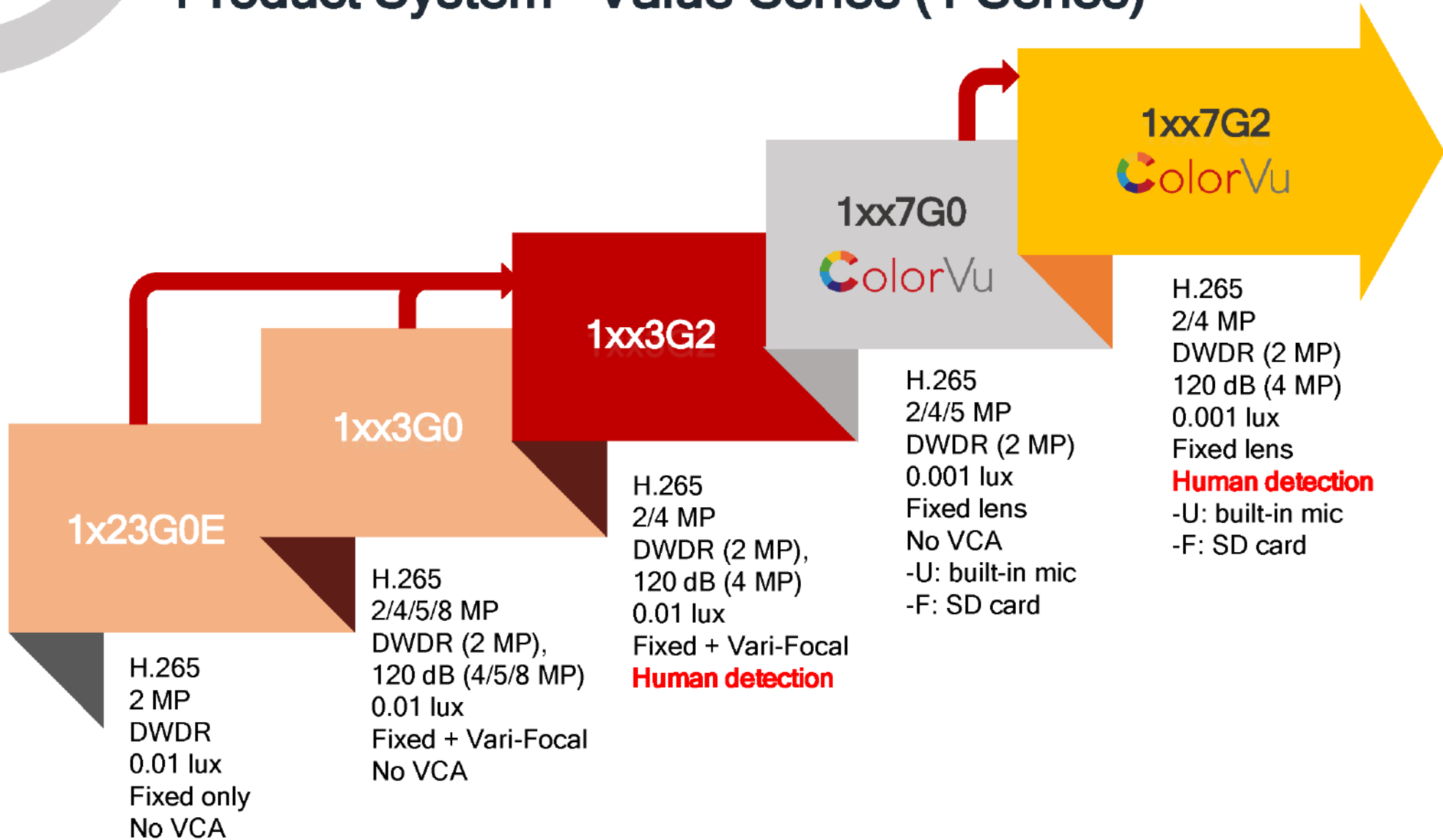


DS-2CD2723G2-IZS
DS-2CD2743G2-IZS
DS-2CD2763G2-IZS
DS-2CD2783G2-IZS

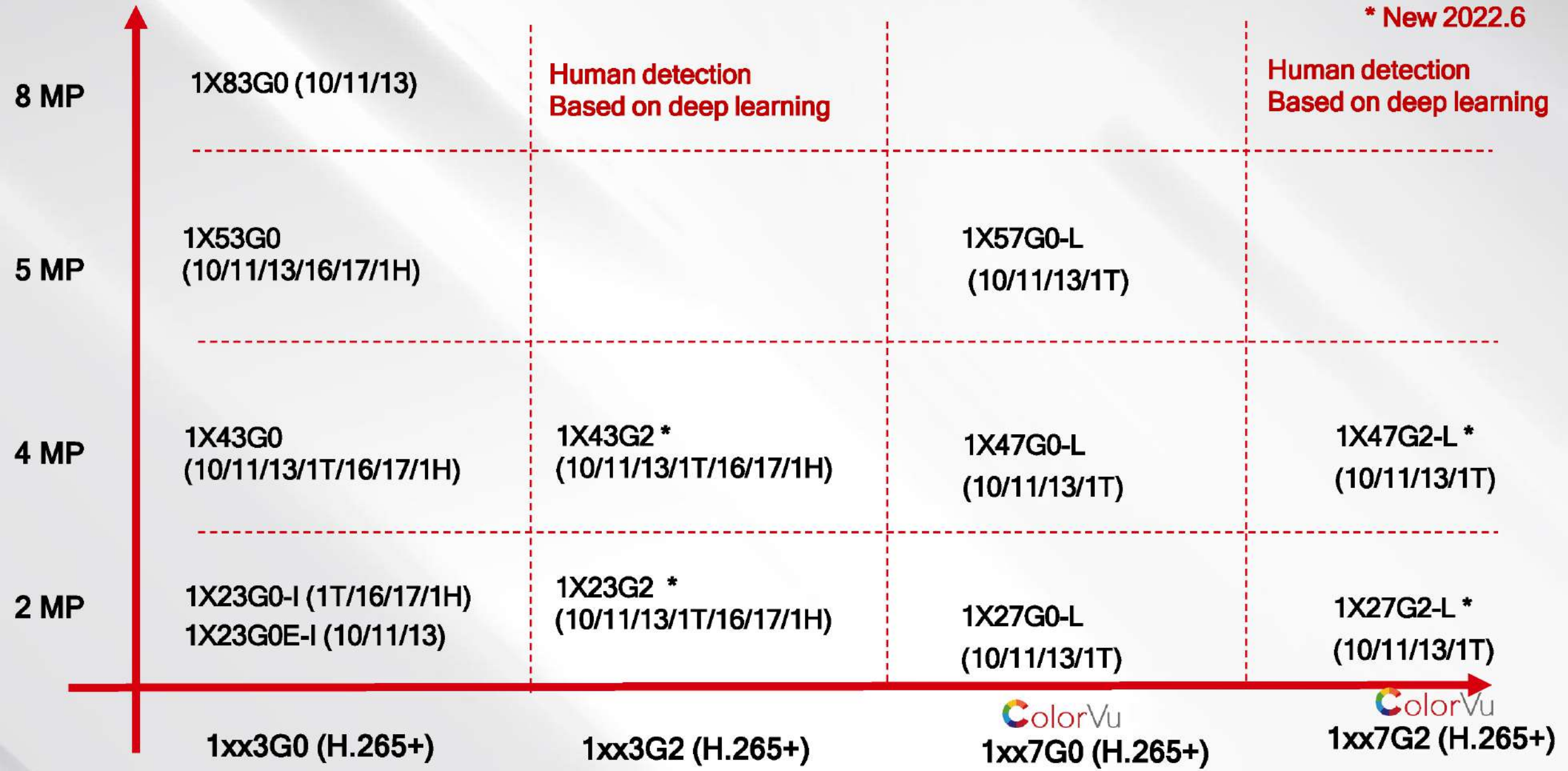


DS-2CD2H23G2-IZS
DS-2CD2H43G2-IZS
DS-2CD2H63G2-IZS
DS-2CD2H83G2-IZS

Product System - Value Series (1 Series)



Value Series Network Camera Product Map



Value Series with ColorVu

Budget-friendly options of ColorVu



ColorVu technology



2/4/5 MP



0.001 lux @ F1.0



IP67



Value Series with ColorVu

Product Showcase - 1 Series with ColorVu



DS-2CD1057G0-L(UF) (C)
 DS-2CD1047G0-L(UF) (C)
 DS-2CD1027G0-L(UF) (C)



DS-2CD1157G0-(UF) (D)
 DS-2CD1147G0-(UF) (D)
 DS-2CD1127G0-(UF) (D)



DS-2CD1357G0-L(UF) (C)
 DS-2CD1347G0-L(UF) (C)
 DS-2CD1327G0-L(UF) (C)



DS-2CD1T57G0-L(UF) (C)
 DS-2CD1T47G0-L(UF) (C)
 DS-2CD1T27G0-L(UF) (C)

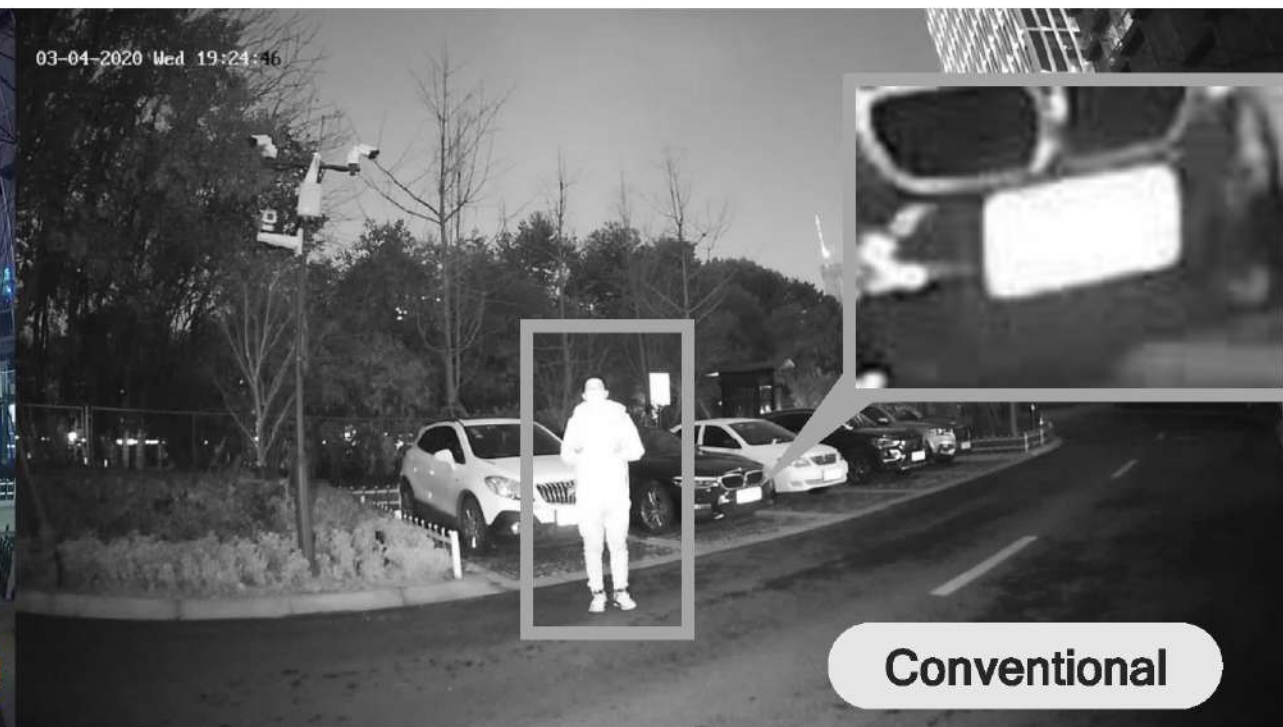


Value Series with ColorVu



* Image is shot with supplemental light OFF

✓ In most scenarios, warm light is not necessary for ColorVu-enabled cameras to generate clear and colorful night image



* Image is shot with supplemental IR light ON

✗ Overexposure of IR on close target or reflection of IR on license plates are inevitable.

Upcoming Products

Value Series with ColorVu

 **ColorVu** technology

 **2/4 MP**

 **0.001 lux @ F1.0**

 **Human detection in motion detection**
Based on deep learning

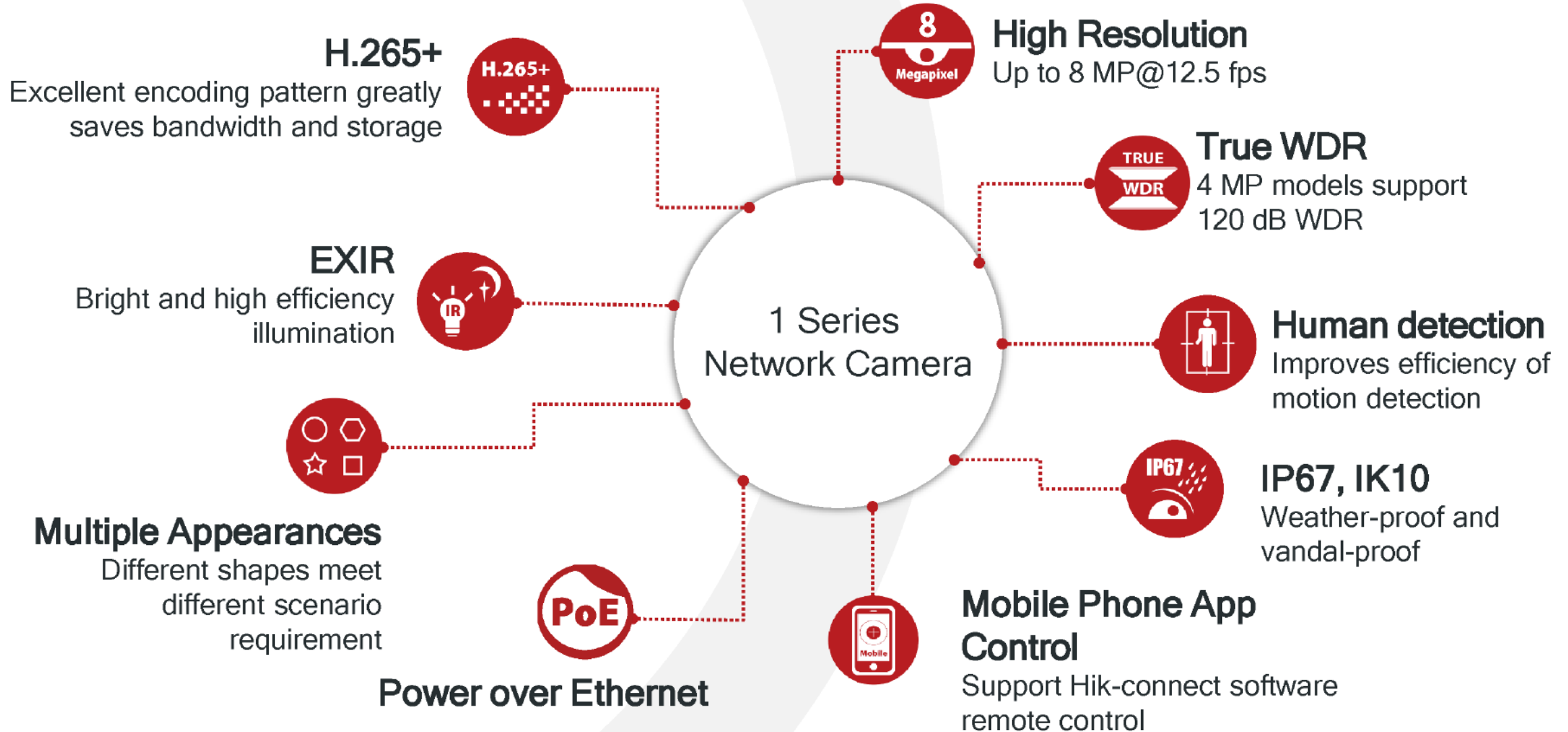
 **IP67**



DS-2CD1XX7G2
2022.6

Value Series Network Camera

Meeting Basic Video Security Requirements



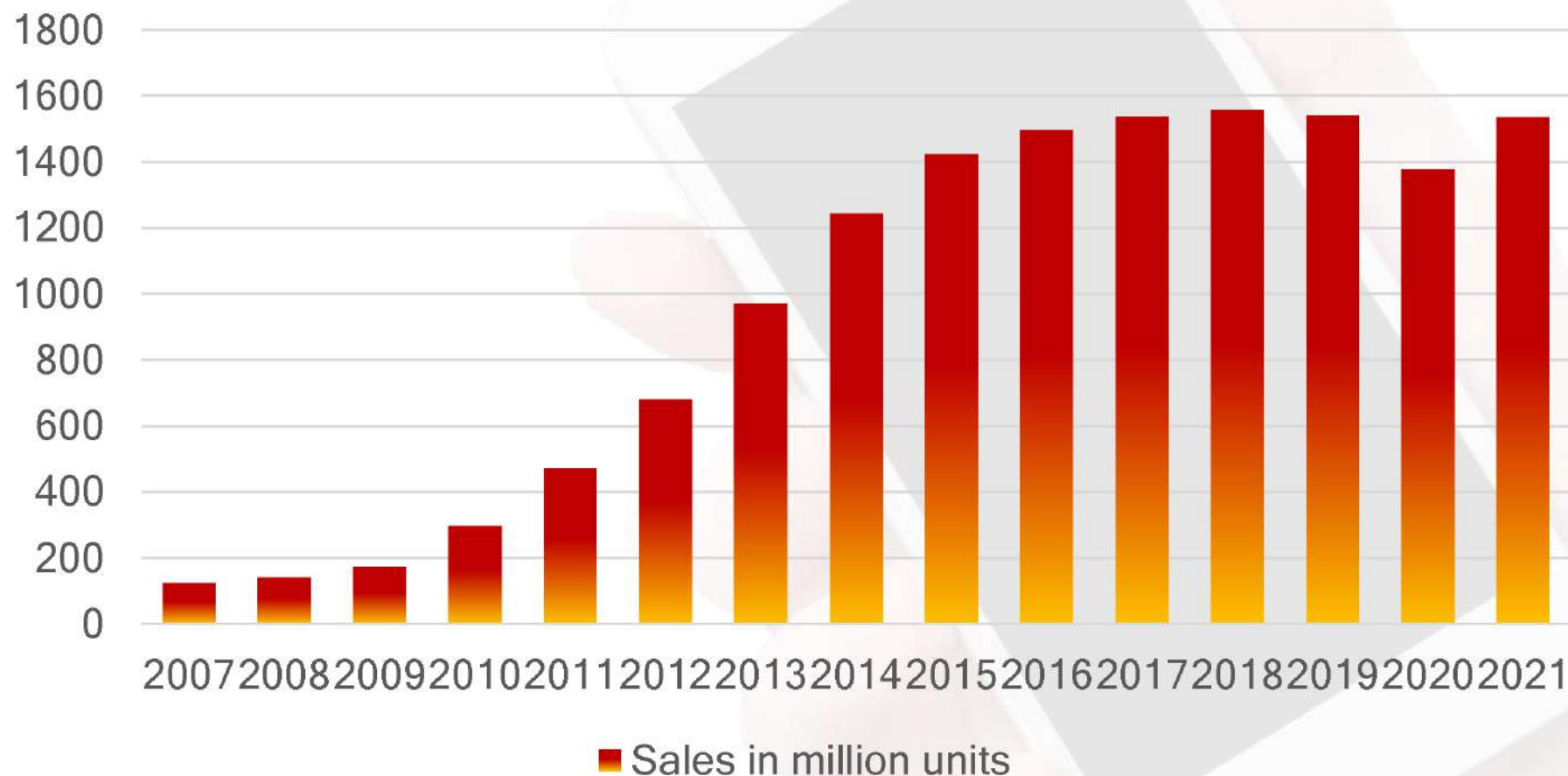


02 PT Cameras

- Background of PT cameras
- Benefits of PT Cameras
- Product Showcase

Market Trends

Increase of smart phones leads to wide application of IoT



Numbers of smartphone sold to end users worldwide from 2007 to 2021

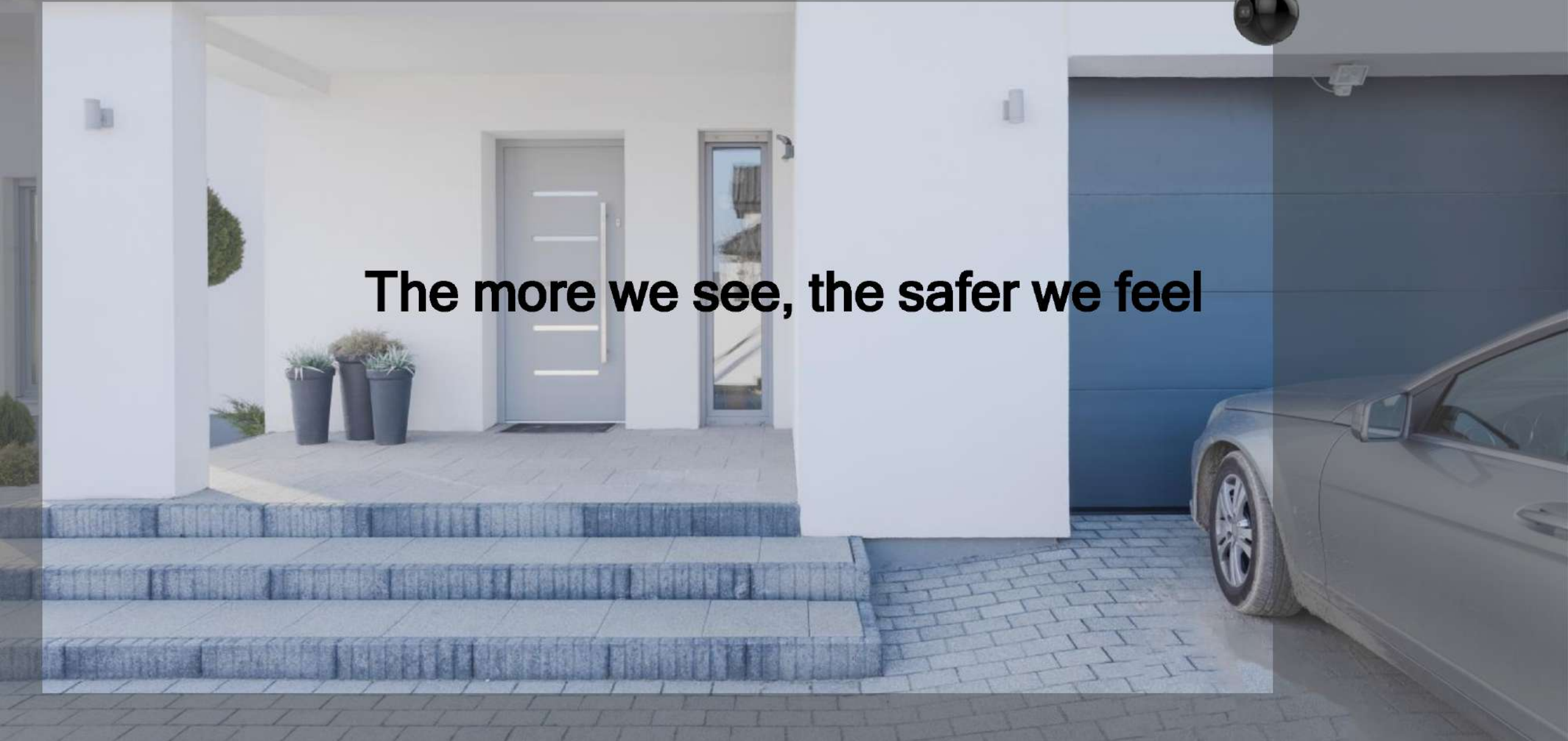
Market Trends

Recognition of Security System with Remote Control



Market Trends

The more we see, the safer we feel



Market Trends

Development of PT cameras

The majority of consumer cameras from Shenzhen in OEM market support **PT**

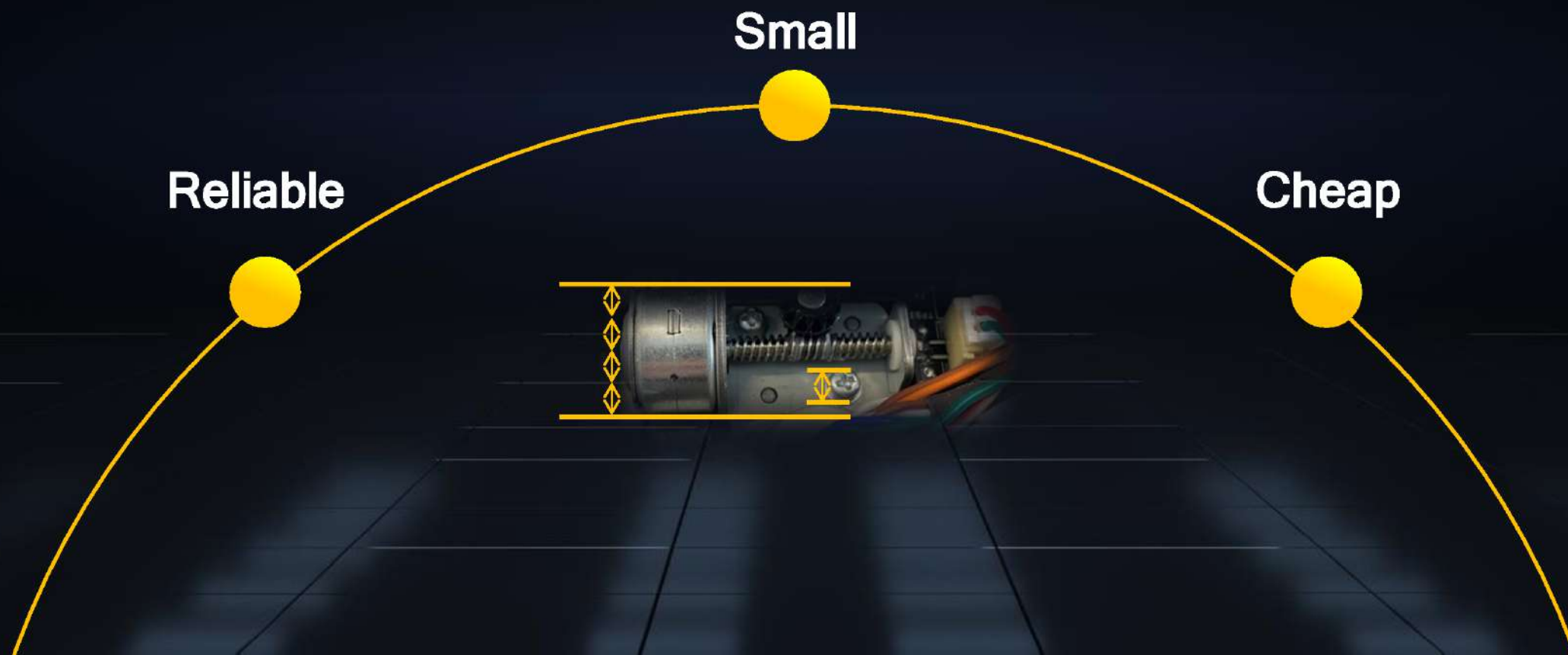
According to our estimation, annual growth rate of PT cameras can reach more than

100%



Technical Trends

Development of motors



Technical Trends

Smaller motor and new structure design enables compact size



Market Analysis of PT and PTZ Cameras

Projects



Professional PTZ Cameras

15X or more optical zoom, 4-inch or larger in size, professional functions for projects

Distribution



PT Cameras

Fixed focal length or 0x - 4 x optical zoom, medium size, functions of security cameras

DIY



Consumer Cameras with PT

Consumer cameras of home applications

PT Cameras

Friendly to Installer with Higher Efficiency

Fixed Cameras



VS

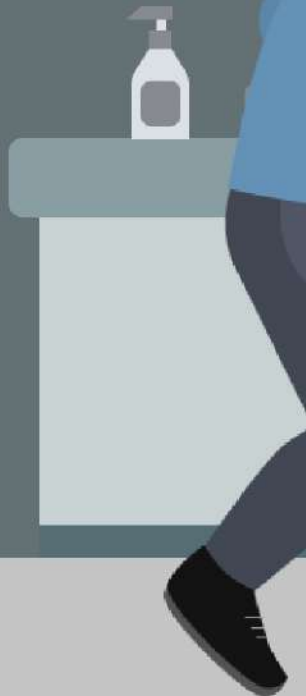
PT Cameras



All-in-one bracket







Great User Experience with Hik-Connect app



PT Cameras

Just a Matter of a Turn

PT Function

- Wide coverage, view every direction freely
- Support preset point

1

Easy Installation

- No need to adjust viewing angle carefully during installation

2

Two way audio

- Plug and play
- Easy installation benefit from less wiring

3

Various camera forms

- Suitable for different environments
- PT dome: unnoticeable direction
- PT bullet: strong deterrence

4

High Reliability

- Water and dust resistant (IP66), no worries of rain and fog

5

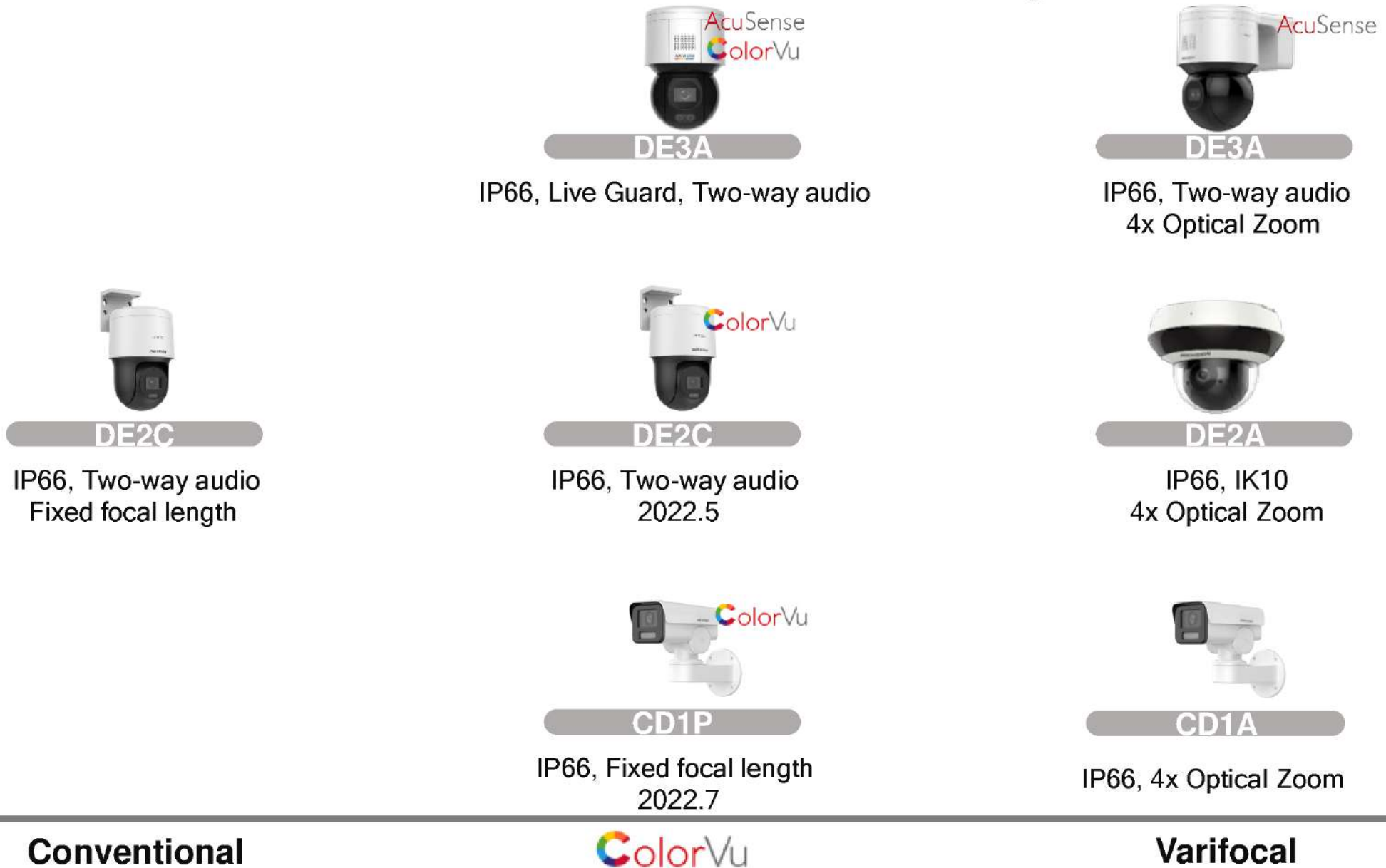
All-in-one bracket

- Higher installation efficiency

6



Network PT Product Family



PT Bullet

- 2/4 MP
- 0.01 Lux @ F1.6
- Pan: -100° to 100°, tilt: -45° to 20°
- 120 dB WDR
- 2.8 - 12 mm motorized varifocal lens
- IP66



DS-2CD1A43G0-IZ
DS-2CD1A23G0-IZ
Released

PT Dome

- 2/4 MP, 0.01 Lux @ F1.6
- IR or white light
- Pan: 0° to 340°, tilt: -5° to 105°
- Two-way audio
- 2.8/4 mm lens
- IP66



DS-2DE2C400MW-DE(F0)(S7)
DS-2DE2C400MW-DE(F1)(S7)
DS-2DE2C200MW-DE(F0)(S7)
DS-2DE2C200MW-DE(F1)(S7)

Released

Product Replacement

No changes in parameters



DS-2DE3A400BW-DE(F1)(S5)(B)



DS-2DE3A400BW-DE(F1)(T5)

Product Replacement

No changes in parameters



DS-2DE2A404IW-DE3(S6)
DS-2DE2A404IW-DE3/W(S6)
DS-2DE2A204IW-DE3(S6)
DS-2DE2A204IW-DE3/W(S6)



DS-2DE2A404IW-DE3(S6) (C)
DS-2DE2A404IW-DE3/W(S6) (C)
DS-2DE2A204IW-DE3(S6) (C)
DS-2DE2A204IW-DE3/W(S6) (C)

Upcoming Products

PT Dome

- 2/4 MP, 0.001 Lux @ F1.0
- Warm light **ColorVu**
- Pan: 0° to 340°, tilt: -5° to 105°
- Two-way audio
- 2.8/4 mm lens
- IP66



DS-2DE2C400SCG-E(F0)
DS-2DE2C400SCG-E(F1)
DS-2DE2C200SCG-E(F0)
DS-2DE2C200SCG-E(F1)

2022.5

Product Showcase

PT Cameras



DS-2CD1A43G0-IZ
DS-2CD1A23G0-IZ



DS-2DE2A404IW-DE3(S6) (C)
DS-2DE2A404IW-DE3/W(S6) (C)



DS-2DE2C400MW-DE(F0)(S7)
DS-2DE2C400MW-DE(F1)(S7)
DS-2DE2C200MW-DE(F0)(S7)
DS-2DE2C200MW-DE(F1)(S7)



DS-2DE3A400BW-DE(F1)(T5)



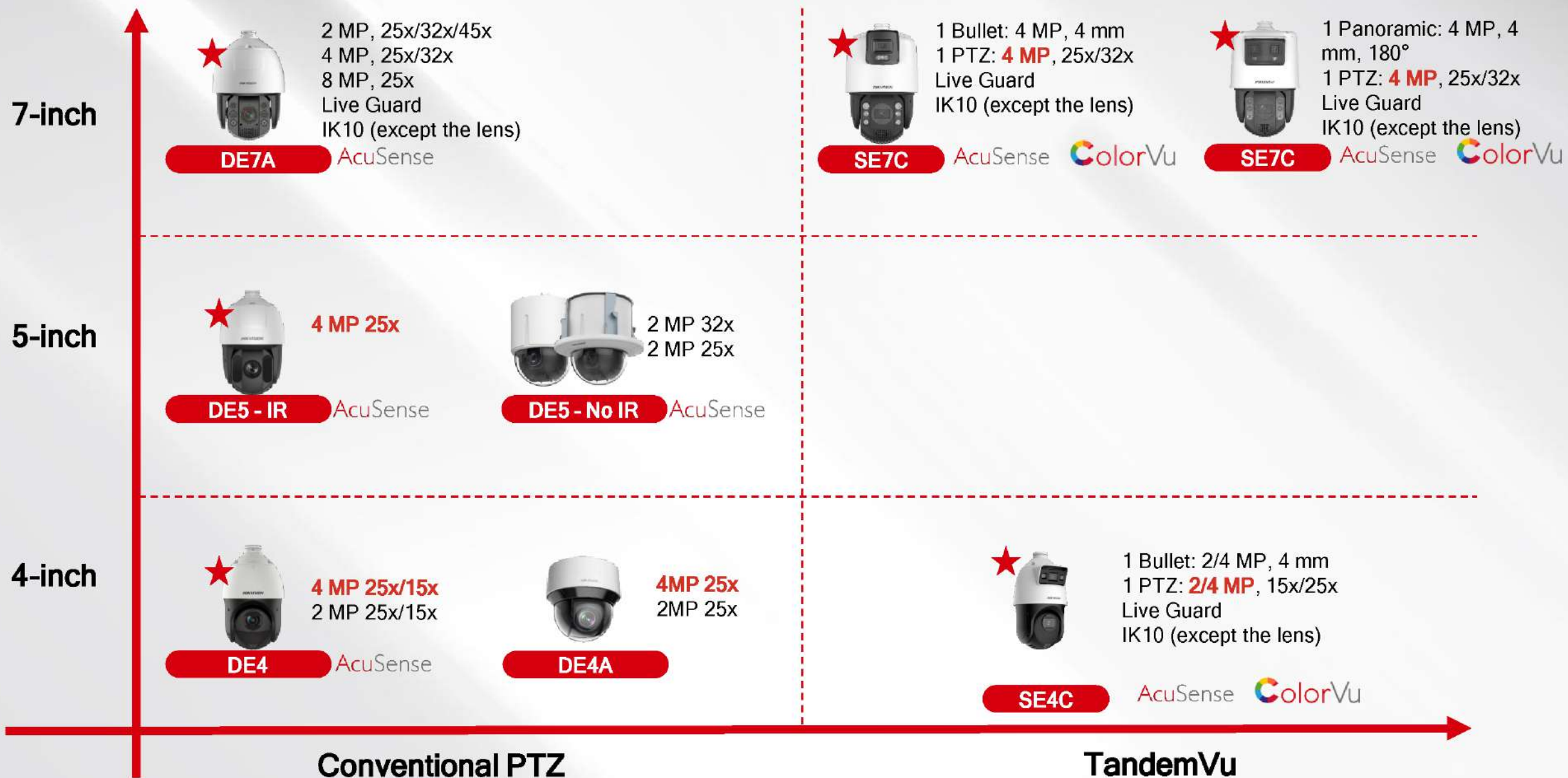
DS-2DE3A404IW-DE (S6)
DS-2DE3A404IW-DE/W(S6)

03 PTZ Cameras

- Spotlight Products:
 - TandemVu PTZ Camera with ColorVu Technology

Network PTZ Camera Product Map (Type D)

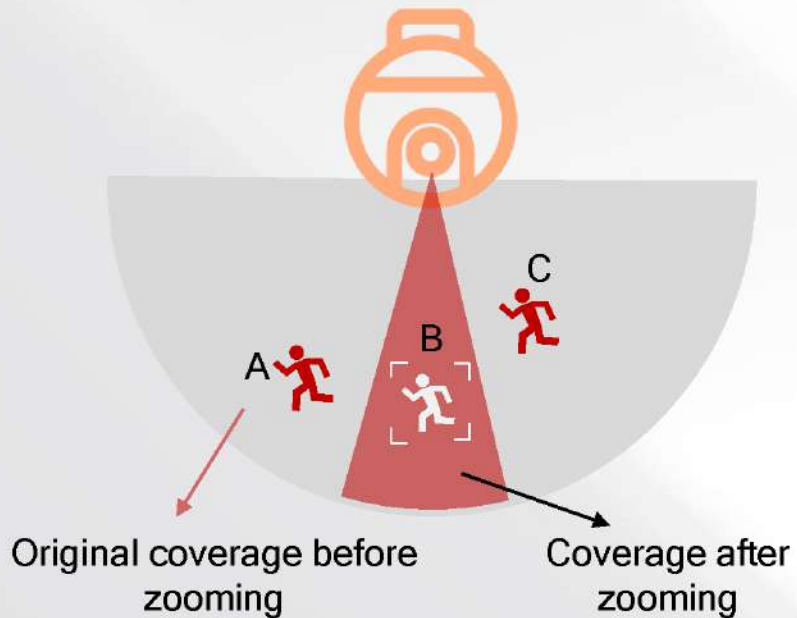
HIKVISION



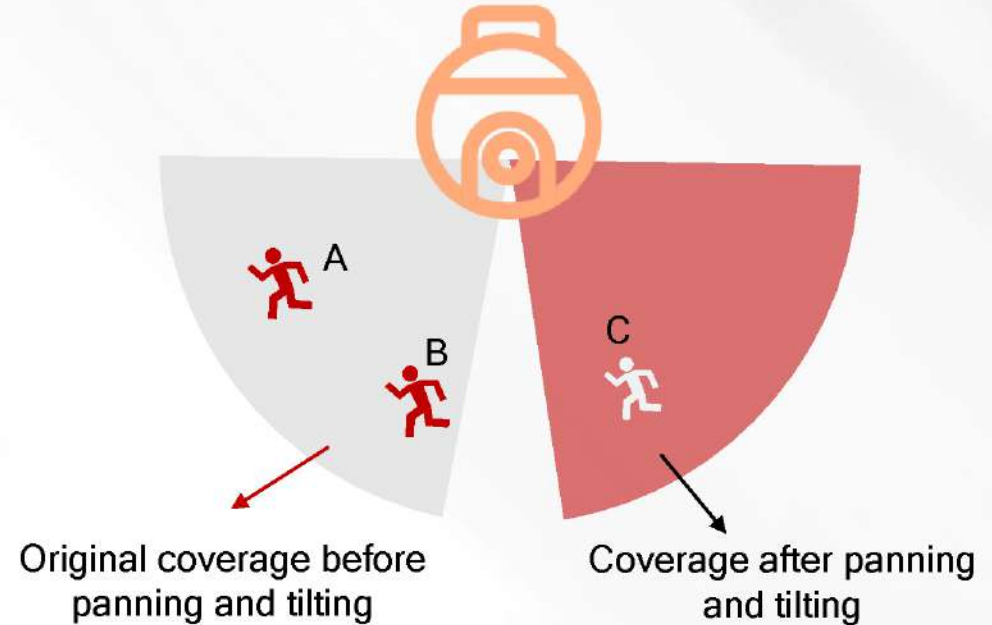
Limitation of Conventional CCTV Systems

A single PTZ camera...

When a PTZ zooms *in*, it loses the wider image.



When a PTZ pans and tilts, it loses its original image.



Limitation of Conventional CCTV Systems

A PTZ camera plus a bullet camera...



Doubles the budget

The total budget of one PTZ plus one bullet is much higher.



Complicates installation

The cabling, power supply installation, and camera angle adjustment add complexity.



Makes linkage difficult

Linking two cameras operating independently adds difficulty.

TandemVu PTZ Camera

Big picture and details, in one view



What is TandemVu PTZ Camera



Hikvision's new **TandemVu PTZ** cameras feature next-generation technology, integrating a bullet camera and a PTZ camera in one unit. This exciting new type of camera provides big picture and small details in “tandem,” inspiring its name.

The overall view remains even during the pan, tilt, and zoom maneuvers, so that users will see everything and miss nothing at any given instant, getting unparalleled situational awareness from the moment they set the camera up.

Big Picture and Details, In One View



ColorVu



Colorful Global
Bullet View



Detailed PTZ View

Enjoy Multiple Advantages of the Integrated Design

One camera purchase for multiple-camera benefits

➤ For SIs

- The two-in-one design gets around any compatibility problems when pairing different devices. Project application and install are much easier.
- One TandemVu PTZ camera is more cost-effective than two conventional cameras with accessories.

✓ Budget-friendly



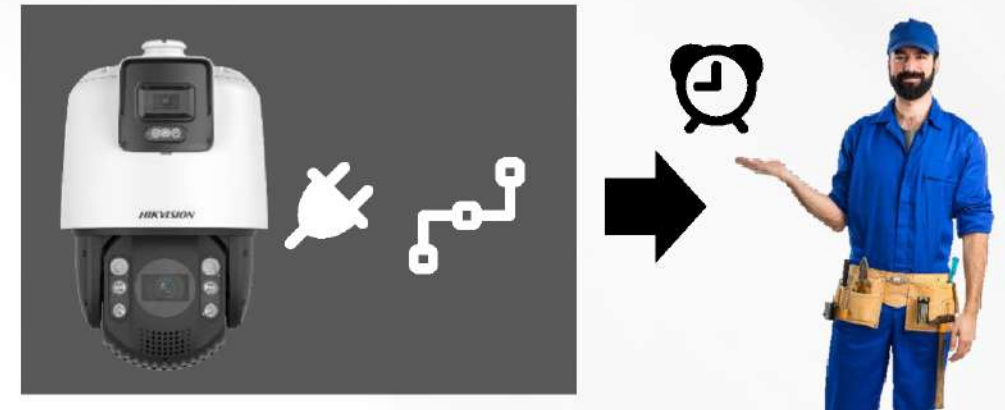
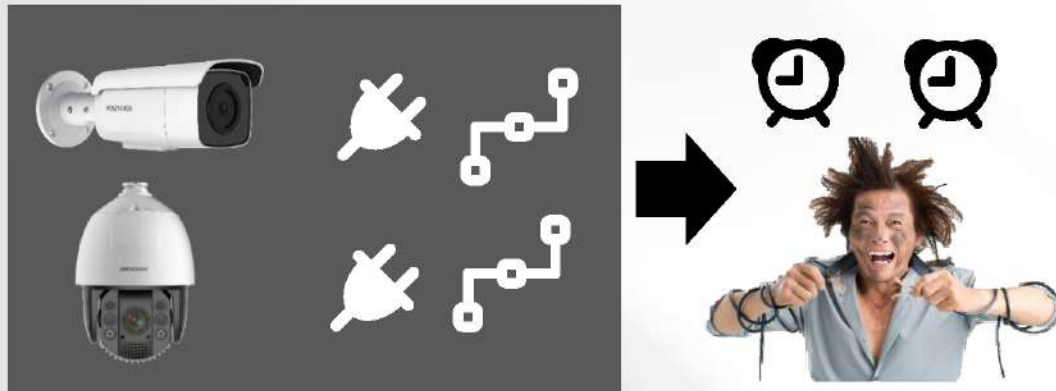
Enjoy Multiple Advantages of the Integrated Design

One-time Installation

➤ For Installers:

- One-device installation
- One-time wiring
- One-time angle adjustment

✓ Saving time and energy



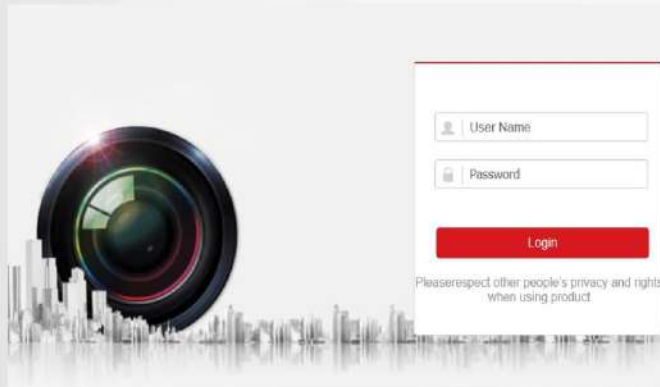
Enjoy Multiple Advantages of the Integrated Design

One IP to manage

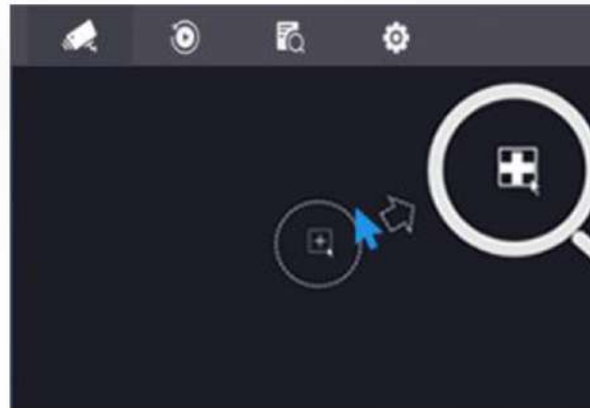
➤ **For installers and end users:**

- In contrast to installing one bullet and one PTZ, the TandemVu PTZ has only one IP address for dual-channel operations.

✓ **Easy to manage and easy to use**



Log in once
(TandemVu PTZ website)



Add once
(Local NVR GUI)



Activate once
(HCP platform)

AcuSense Technology Brings Intelligence and Efficiency

AcuSense



Focus on Human/Vehicle

Only human or vehicle can trigger alarms, other targets disregarded.

Quick target search

Find the video you need more quickly with classified video footages in NVR.

Act at Realtime

Warns off intruders with **strobe light alarm** and **audio alarm**. (30 m)



Warning! This is a restricted area,
please keep away!

** Audio customization is supported. (3 pieces)*



Product Showcase

Bullet

- 4 MP
- 4 mm
- 0.0005 lux @ F1.0
- 120 dB
- ColorVu AcuSense

PTZ

- 4 MP
- 25x / 32x
- 0.005 lux @ F1.5
- 120 dB
- AcuSense, face capture



30 m White light

200 m IR distance
for PTZ

Strobe lights

Built-in speaker

DS-2SE7C425MW-AEB(14F1)(P3)

DS-2SE7C432MW-AEB(14F1)(P3)

Solutions with NVR

TandemVu PTZ Camera



DS-2SE7C425MW-AEB(14F1)(P3)
DS-2SE7C432MW-AEB(14F1)(P3)

NVR



Firmware: V4.51.025

DS-76xxNI-I2

DS-77xxNI-I4



Firmware: V4.51.200

DS-76xxNXI-I2

DS-77xxNXI-I4

- Video recording
- Live feed
- Playing back video footage with human or vehicle targets
- Searching human or vehicle targets directly

Recommended Applications for TandemVu PTZ Camera



Industrial parks

The bullet view to get 7*24h recording of key roads;
The PTZ view to get patrols patterns.



Cross-roads

The bullet view for continues recording;
The PTZ view for target details on the road .



Schools

The bullet view for perimeter;
The PTZ view for human details at the gate.

Application Scenarios - Perimeters

Perimeter Protection

Up to 400-meter long fences or walls



Application Overview

Perimeter protection is necessary in many areas to establish security across the property, like factories, schools, warehouses, and industry parks.

Normally, perimeter system installation is costly and complex due to the expansive area to cover.

Primary Requirements

- With perimeter protection, fewer intrusions occur.
- When would-be intruders approach, they will be detected and audibly warned to turn back.
- If an intrusion occurs, security personnel can be informed immediately and details of the trespasser will be recorded and stored.

Pain Points

- Conventional non-video solutions cannot record and capture trespassers.
- Conventional video solutions require several cameras to cover the entire perimeter. Installation and management are complex.
- A fixed camera cannot track details and movement of a trespasser.
- When accidents happen, a conventional PTZ zooms in to get details and immediately loses the view of the surrounding area.
- Alarms are triggered frequently by swaying leaves or animals climbing on walls or fences. Most security guards are tired of false alarms.

Solution Value

- Long IR distances and large zoom ratios can cover larger areas.
- Strobe lights and audio alarms keep trespassers away.
- Only human or vehicle targets can trigger alarms, improving efficiency for security personnel.
- When one intrusion happens, the PTZ camera captures details and the bullet camera maintains the overall view.
- Searching for human or vehicle targets directly when intrusions occur helps law enforcement find related evidence quickly.

Upcoming Products

4-inch TandemVu

HIKVISION

Bullet

- 2/4 MP
- 2.8 mm
- 0.0005 lux @ F1.0
- 120 dB
-  

PTZ

- 4 MP
- 15x / 25x
- 0.005 lux @ F1.5
- 120 dB
- 



Release Time: 2022.6

Upcoming Products

7-inch Panoramic TandemVu

Bullet

- 4 MP 180° Panoramic View
- 4 mm dual lens
- 0.0005 lux @ F1.0
- 120 dB
- ColorVu Technology AcuSense Technology

PTZ

- 4 MP
- 25x / 32x
- 0.005 lux @ F1.5
- 120 dB
- AcuSense Technology
- Live Guard



Release Time: 2022.6

04 NVR

NVR Product Map

Upcoming

- K series NVR with AcuSense technology

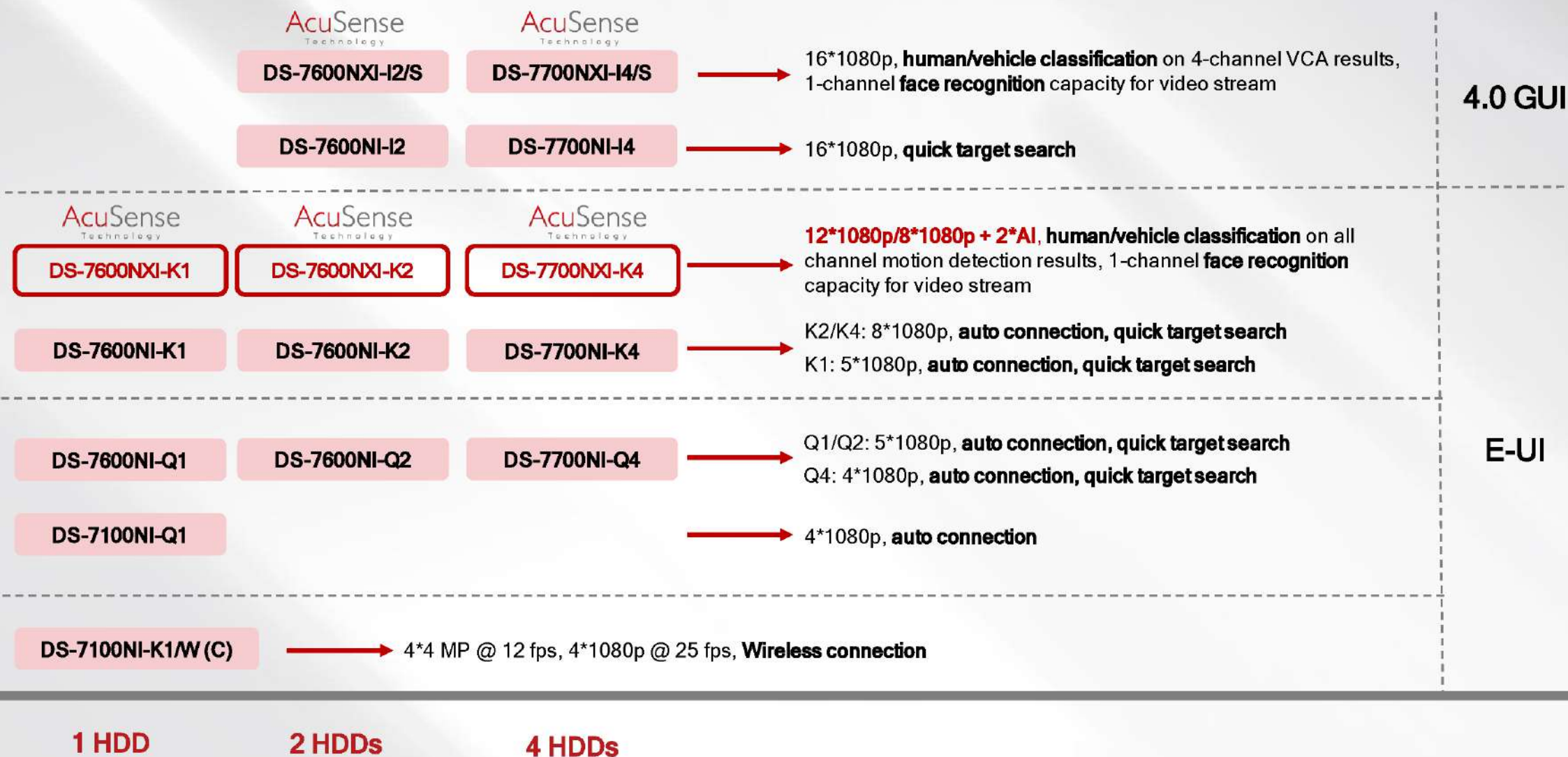
Upgraded

- Cloud storage for NVR

NVR Product Map

HIKVISION

New



Bring **AI** to everyone

K series NVR with AcuSense to be released

May.2022

DS-7600N**XI**-K1



DS-7600N**XI**-K2



DS-7700N**XI**-K4



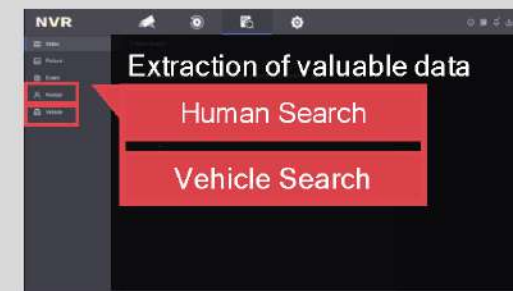
K series NVR with AcuSense

Targets classification



Your treasurable time is worth focusing on human and vehicle events.

Quick target search



Saving time of video searching.

Face recognition

- 1-ch video stream and 4-ch picture stream.
- Face recognition and targets classification can not be available at the same time.

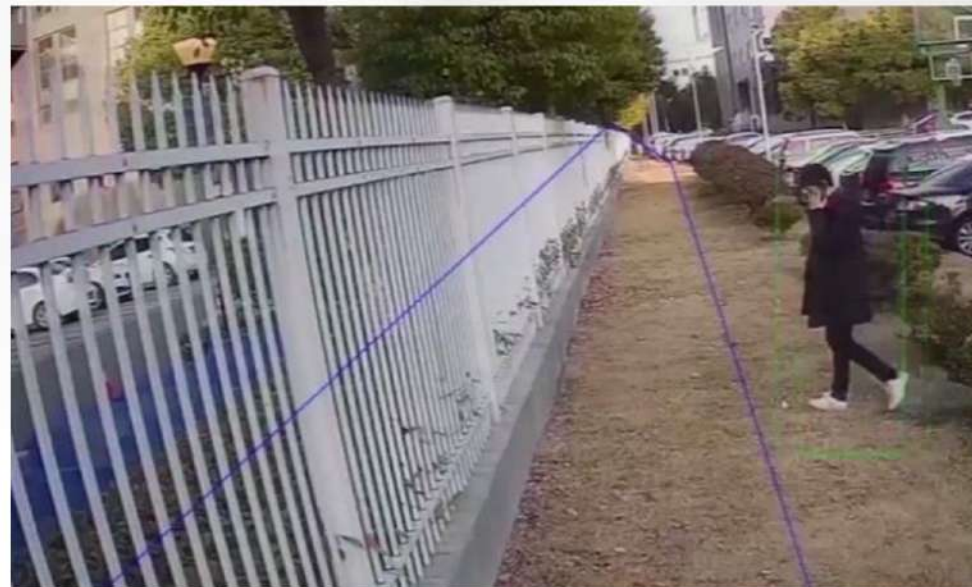
High decoding capacity

12-ch @ 1080p

Targets classification



Based on motion detection (all channels)



Based on VCA rules (2-channels) *

**This function will be supported via firmware updates in the future.*

Motion detection 2.0

Configuration is easier than motion detection

Motion Detection 2.0 On by Default



Human

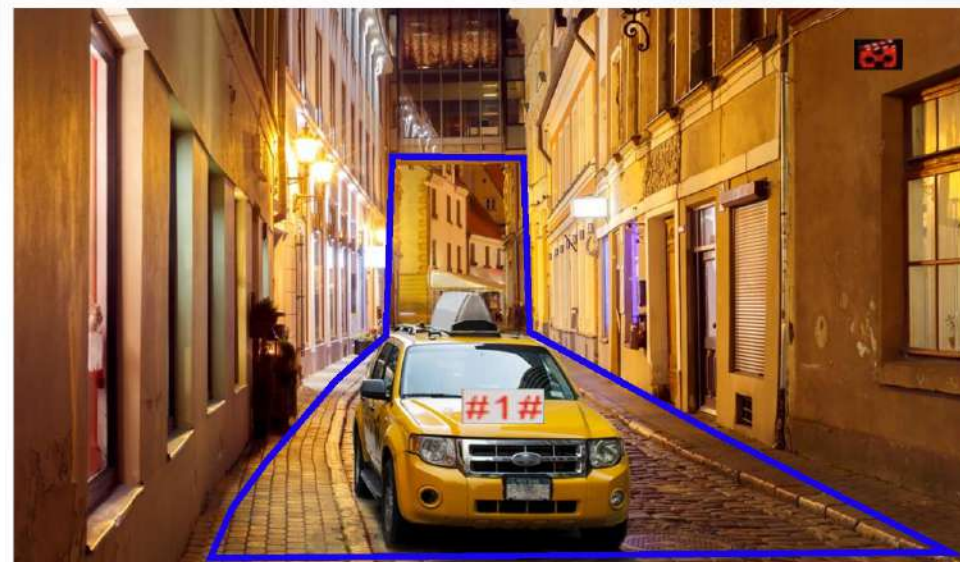


Vehicle



Full screen detection by default

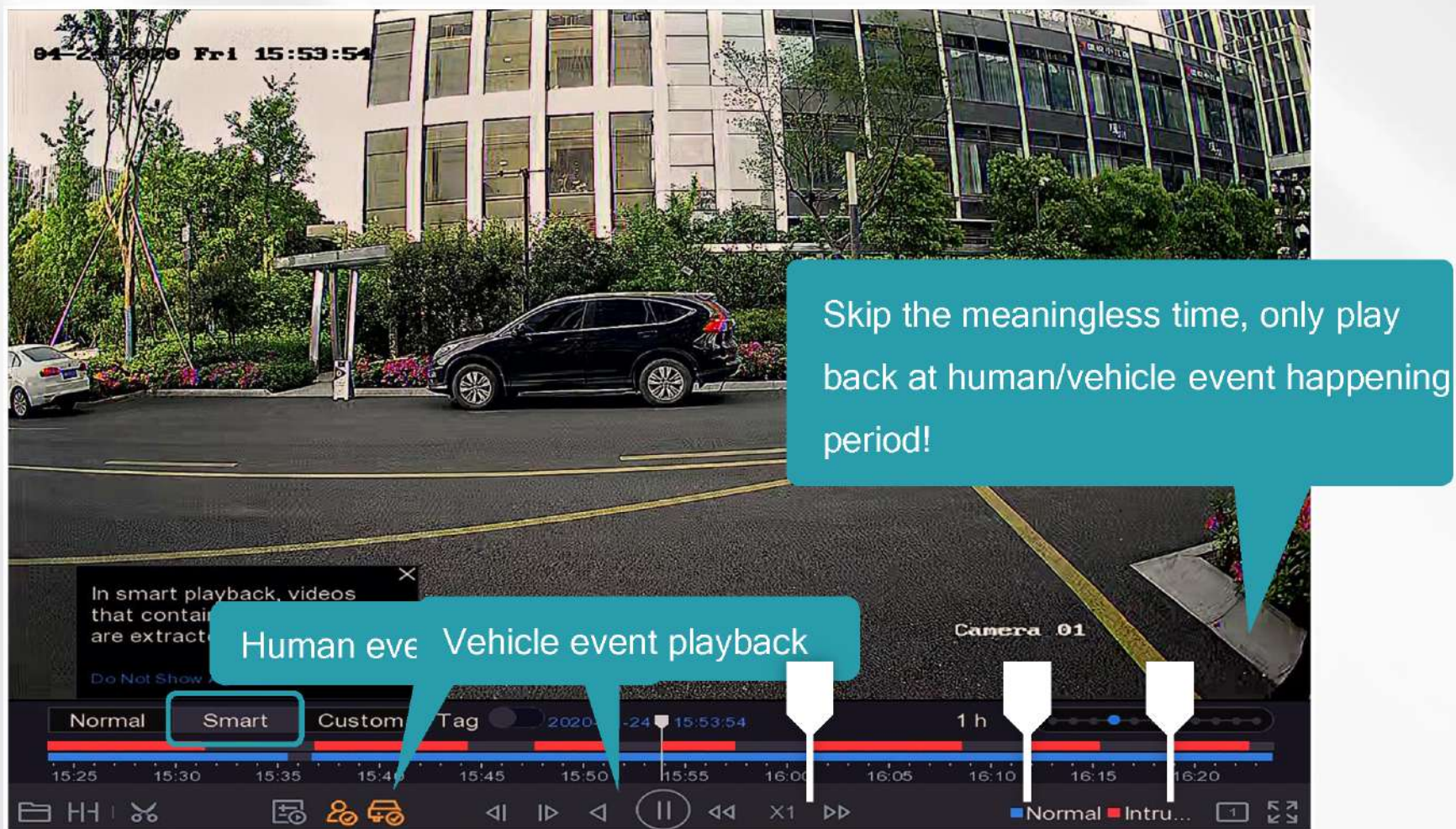
or



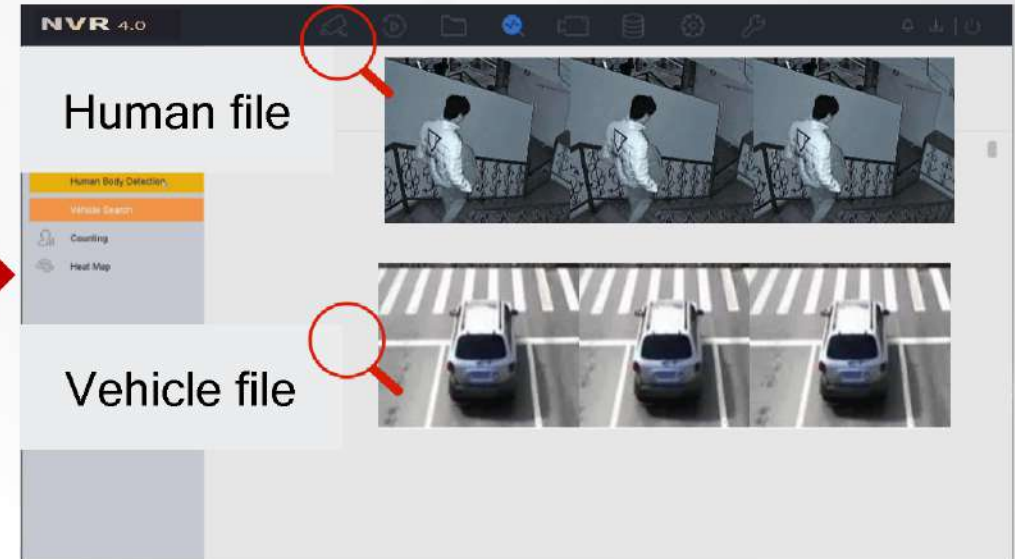
You can set detection boxes anywhere you like

Motion detection 2.0

Playback is more efficient than motion detection



Quick target search



Take a lot of time to search useful alarm information in the amount of video data.



Searching the human or vehicle target you want quickly.

Face recognition



Conventional camera



K Series with AcuSense



1-ch face recognition based on video stream

OR

Face capture camera



K Series with AcuSense



4-ch face recognition based on picture stream

High decoding capacity

Multi-channel simultaneous playback saves video checking time

Conventional K series



8-ch @ 1080p



K series with AcuSense



12-ch @ 1080p

** Functions with AcuSense is not enabled.*

High decoding capacity

	Conventional K series	K series with AcuSense	
		If functions with AcuSense is not enabled	If functions with AcuSense is enabled
Decoding capacity	8-ch @ 1080p	12-ch @ 1080p	8-ch @ 1080p
Channels for AI function	0	0	<ul style="list-style-type: none"> - All channels motion detection 2.0; - 1-ch facial recognition on video stream/4-ch facial recognition on picture stream; - 2-ch targets classification on VCA results* <p><i>AI functions can not be available at the same time.</i></p>

This function will be supported by the coming firmware.

Application scenarios

Inns



Background:

When customers lose items or accidents happen, processes should be traced back easily and quickly. However, conventional products face many challenges:

- Lots of time spent on finding the right targets;
- Constant disturbance by useless alarms in perimeter.

NVR with AcuSense provides:

- Multiple channels playback simultaneously without switching windows.
- Searching videos contain intruders directly without checking one by one.
- Receiving the accurate alarms about human and vehicles.

Small Office

Small Stores

Restaurants

Cloud Storage for NVR



When local evidence is missing, what can you do?







Back up on the Cloud (HPC), and your safety is doubled



Recording



Cloud storage

Software	Model and Firmware	Parameter
  Hik-ProConnect V1.8    Hik-Connect App V4.18	 Firmware V4.51.025 or above: <ul style="list-style-type: none">• I series NVR• DeepinMind series NVR• NVR with AcuSense technology Firmware V4.71.000 or above: <ul style="list-style-type: none">• <i>K series NVR</i>• <i>Q series NVR</i>	<ul style="list-style-type: none">• Cloud storage channel:<ol style="list-style-type: none">1. 2-ch per NVR (I series, DeepinMind series, NVR with AcuSense technology)2. 1-ch per NVR (K, Q series)• Cloud video parameter:<ol style="list-style-type: none">1. Resolution: up to 8 MP2. Frame rate: unlimited3. Bandwidth: ≤ 5 Mbps• Cloud video type:<ol style="list-style-type: none">1. Motion detection2. Line crossing3. Intrusion• Cloud storage package type:<ol style="list-style-type: none">1. 7-day monthly2. 7-day annual3. 30-day monthly4. 30-day annual

Note: for detailed device compatibility, refer to the latest "Compatibility List" in Hik-ProConnect portal or mobile App.

Thank you!!

270+ Five Stars Reviews



SGCCTV®

CHOICE®
The Omni Protection People
CCTV SPECIALIST



Best CCTV Store Sim Lim Square
(SGCCTV Singapore)

Website Directions ★ Saved Call

4.9 ★★★★★ 276 Google reviews

Electronics store in Singapore

**Sim Lim
Square #02-81**



+65 9853 4404



Website Directions ★ Saved Call

4.9 ★★★★★ 276 Google reviews

Electronics store in Singapore

✓ You manage this Business Profile

Service options: In-store shopping · Kerbside pickup · Delivery

Located in: Sim Lim Square

Address: 1 Rochor Canal Road 02-81 Sim Lim Square, 188504

CHOICE®
CCTV SPECIALIST

<https://www.sgccctv.com.sg/>

Keep Safe Social Distancing

alhua
TECHNOLOGY

 **CCTV** 
SPECIALIST

CHOICE[®]
The Omni Protection People
CHOICECYCLE


SGCCTV

 WWW.SGCCTV.COM.SG

 9853 4404 / 8198 5572

#02-81

Sim Lim Square 02-81 11am~6pm daily

10/10/